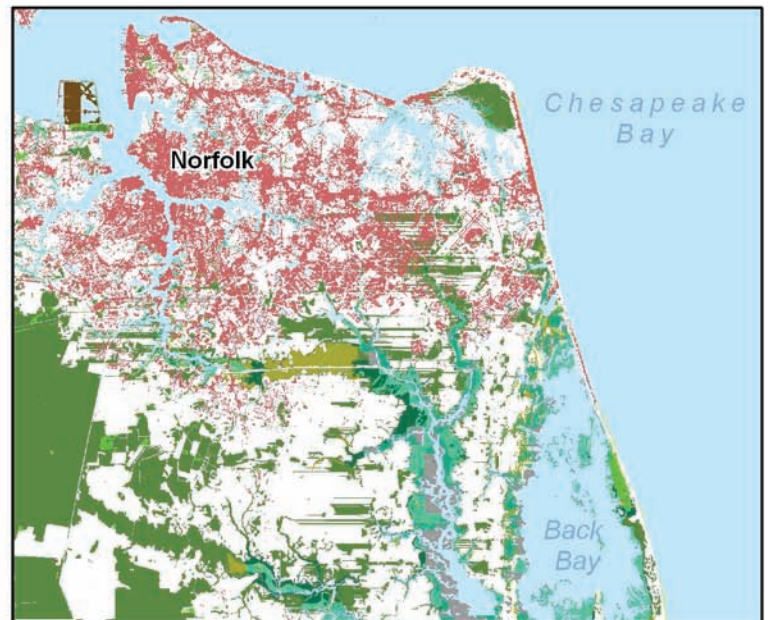
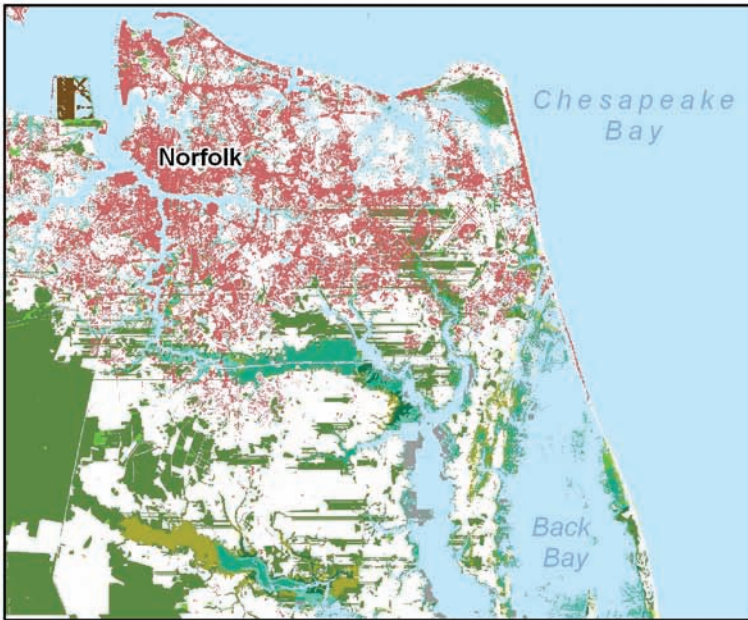


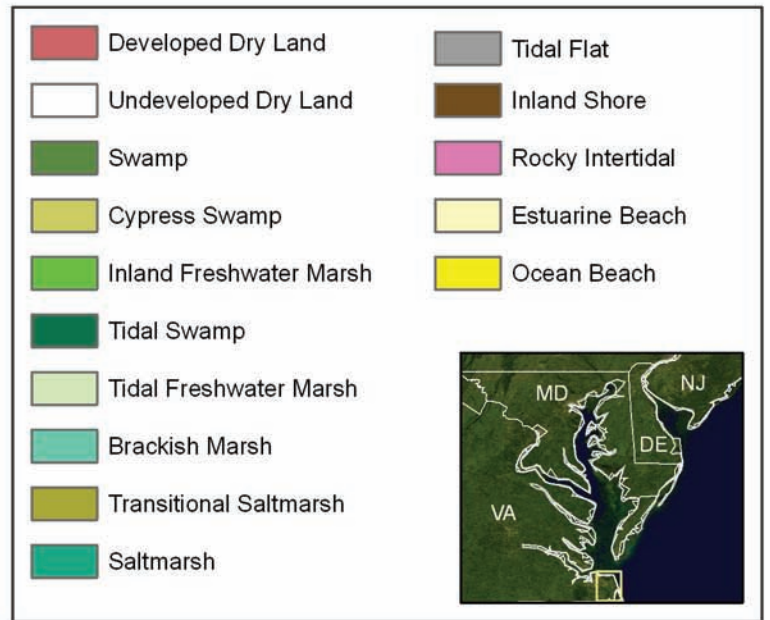
Initial Condition



Year 2050 (11.2 inches)



Year 2100 (27.2 inches)



Lower Tidewater Region

The Lower Tidewater Region, including the cities of Norfolk and Virginia Beach, has extensive urban development surrounded by agricultural and conservation lands. Nearly 20 percent of undeveloped dry land at this site is at risk of inundation, mostly as rivers widen and transitional marsh and saltmarsh expand. While these undeveloped lands provide opportunities for habitats to migrate inland, pressure to develop some of these lands will likely increase because human population in this part of Virginia is projected to grow considerably in the coming decades. Proactive measures to identify and protect lands where habitats can migrate will be critically important. In addition, the region is projected to face a 79 percent

loss of ocean beach by 2100, without extensive beach re-nourishment.

